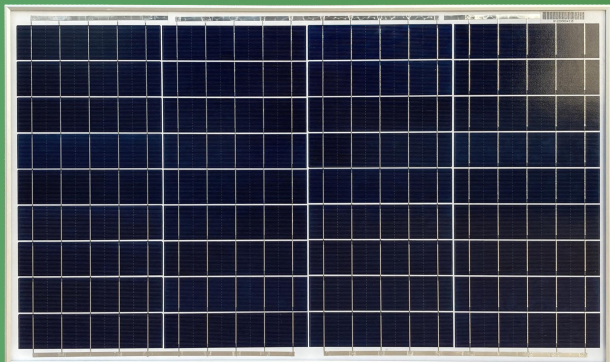




Polycrystalline Module

Dimensions : 660*410*25mm

Poly Power : 37W~40W



40W

Max power output

14.78%

Max Efficiency

±3%

Positive Power Tolerance

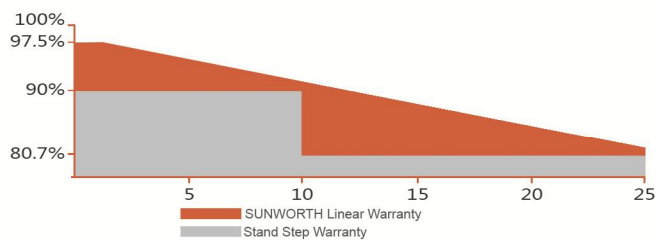
SUNWORTH - Your Trusted Brand of High Quality

- Professional crystalline silicon photovoltaic module manufacturer.
- Fully automated production line with leading photovoltaic technology.
- Adopt strict international standard quality management system ISO 9001:2015, ISO 14001: 2015.
- Passed variety of harsh environmental tests (salt spray, ammonia and sand storm corrosion test IEC61730-2:2016, IEC61215:2016).
- Twice EL test to ensure the reliability of the solar modules.

Linear Performance Warranty

10 years Product Warranty

25 years Linear Power Warranty



5 Bus Bar Solar Cells

5 BB solar cells, improve the modules' efficiency, and contributed a better aesthetic appearance



High Efficiency

High efficiency solar cells to keep the module efficiency reach to 14.78%



Low-light Performance

Advanced glass and cell surface textured design ensure excellent performance in low-light environment



PID Resistance

Excellent Anti-PID performance guarantee limited power degradation for mass production



Severe Weather Resilience

2400 Pa wind load
5400 Pa snow load



100% EL Testing

100% EL detection before and after lamination

Dimensions: 660*410*25mm
Poly Power: 37W~40W

Electrical Characteristics

Model No.	SW040P-36
Maximum Power (Pmax)	40W
Max-power Voltage (Vmp)	18.73V
Max-power Current (Imp)	2.14A
Open-circuit Voltage (Voc)	22.69V
Short-circuit Current (Isc)	2.26A
Module Efficiency	14.78%
Operating Temperature	-40℃~+85℃
Maximum System Voltage	300Vdc
Maximum Series Fuse Rating	10A
Power Tolerance	±3%

*STC condition: 1000 W/m², 1.5AM and 25℃ cell temperature

Temperature Characteristics

NMOT	46℃±2℃
Temperature Co-efficient of Pmax	-0.398%/℃
Temperature Co-efficient of Voc	-0.340%/℃
Temperature Co-efficient of Isc	0.0576%/℃

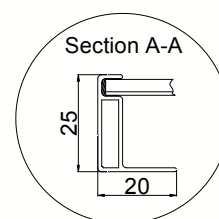
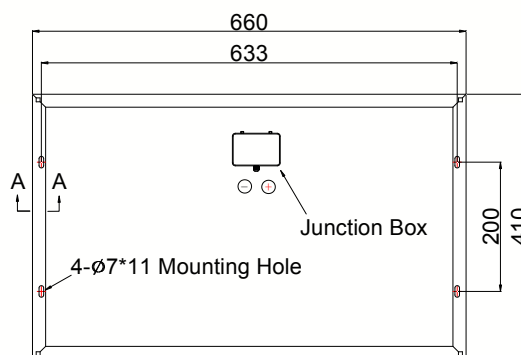
Mechanical Characteristics

Mono Power	37W~40W
Cell Type	Poly 157*39.25mm
Cell Arrangement	36(4*9)
Dimensions	660*410*25mm
Weight	2.5kg
Front Cover	3.2mm tempered glass
Frame Material	Anodized aluminium alloy
Junction Box	IP65 rated
Output Cables	/

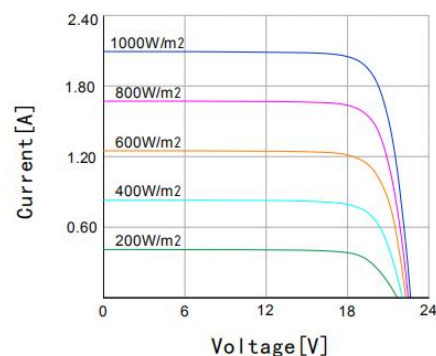
Packing

Packing	20'GP	40'HC
Pieces per Carton	5	5
Pieces/container	2520	5250

Module Size



I-V Curve



SUNWORTH solar modules have superior performance under low solar irradiation condition (200W/ m² (AM1.5, 25 °C)

Website: www.sunworthsolar.com